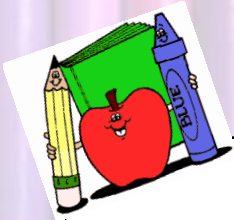


Provider Newsie

September/October Edition

Straight from Early Literacy Connections©



Graph

Graph children's names. Which is the longest? Which is the shortest?

Create

Make an ALL ABOUT ME COLLAGE. Encourage children and families to bring in pictures and cut outs representing the child and their favorite things.

Name Games
level 1 (pg. 1-1)

Move

Play music the children love to dance to. Shine a flashlight on a child and have them say their name and let them do their own dance move. Continue with all the children.

Sing

Pass around the bumble bee cutout, colored and on a popsicle stick as you and children sing the "Hickety Pickety bumble bee" rhyme.



Utilizing Early Literacy Connections© provides you with endless opportunities, no cost trainings, and onsite assistance! Call today to schedule a visit with Hailey Haigh. Training and mentoring visits are available for current curriculum holders and newly interested providers.

For more information call 776-2126 Ext. 251 or email haighh@proactioninc.org



Upcoming Opportunities

- Sept. 10th ➡ Limitless Infants! – Bath 6-8:30pm
- Sept. 13th ➡ CACFP: Ew! What's That? – Bath 6-8:30pm
- Sept. 25th ➡ Limitless Infants! – Montour Falls: 6-8:30pm
- Sept. 25th ➡ **QUALITYstarsNY Info Night - Bath: 6-8pm**
pizza and FREE training credit provided! Call Liz to register
- Sept. 29th ➡ CPR/First Aid – Bath 8:30am-2pm
- Oct. 13th ➡ CPR/First Aid – Bath 8:30am-2pm
- Oct. 16th ➡ Back Off Bully! – Bath 6-8:30pm
- Oct. 22nd ➡ CACFP: Food Safety and Allergies – Bath 6-8:30pm
- Oct. 25th ➡ SUNY Video Conference – 6:45-9pm
- Oct. 27th ➡ **Fall Conference: Active Play Embedded in Your Day – Bath 8am-4pm**
- Oct. 30th ➡ Back Off Bully! – Montour Falls 6-8:30pm

Tips for Creating a Day Care Family

Adapted from Back to School: Why Creating Classroom Community is So Important

A blog post from Katie Kane found on naeyc.org

It is important for children to experience being part of a group, regulating their emotions, and working through tricky social conflicts in order to really learn cognitive material like math concepts and early literacy skills. Creating a day care environment where children feel empowered and invested is done through active practice with social and emotional learning. The following are some tips to assist you in creating a community within your home or center program.

1. Create a culture based on community: this will enable teamwork, cooperation, a willingness to negotiate, and the ability to draw in on one another's skills.
2. Co-create rules with children
 - a. Nurtures a feeling of ownership and accountability.
 - b. Always phrased in the affirmative: example, "we use kind voices with one another" and "It's okay to make mistakes."
3. Focus on Trust and Relationships
 - a. Play games and do projects that require children to learn about one another's similarities and differences.
 - b. Fosters skills for future teamwork.
4. Allow ample time for unstructured play
 - a. This allows children to form their own networks and connections and explore conflict resolution skills.
5. Give children a say
 - a. Allow children to have some influence over decisions related to curriculum topics, parts of the daily schedule, and the physical space around them.
 - b. Resist the urge to micromanage play and activities as children will benefit from working together and learn important cooperation skills.

"A strong classroom (or daycare) community is one in which children feel empowered and valued, and one in which children will ultimately thrive."



A department of Pro Action of Steuben and Yates,

